

Lenovo ThinkServer Partner Pack for Microsoft System  
Center Operations Manager  
Installation Guide



ThinkThink**ThinkServer**Think

**Note:** Before using this information and the product it supports, ensure that you read and understand Appendix A “Notices” on page 26.

**Third Edition (January 2015)**

**© Copyright Lenovo 2015.**

LIMITED AND RESTRICTED RIGHTS NOTICE: If data or software is delivered pursuant a General Services Administration

“GSA” contract, use, reproduction, or disclosure is subject to restrictions set forth in Contract No. GS-35F-05925.

## Table of Contents

1	Introduction .....	5
<hr/>		
1.1	Purpose .....	5
1.2	Audience and Scope .....	5
1.3	Conventions Used in the Document .....	5
2	Installation Overview .....	6
<hr/>		
2.1	Overview of the Application .....	6
2.2	System Requirements .....	7
2.3	Pre-installation Task .....	8
2.4	Installation Procedure .....	9
2.5	Importing Management Pack through SCOM Console .....	15
2.6	Uninstallation Procedure .....	21
3	Additional Information .....	24
<hr/>		
3.1	Troubleshooting .....	24
3.2	Abbreviations .....	24
3.3	Frequently Asked Questions (FAQs) .....	24
4	Appendix A. Notices .....	26
5	Trademarks .....	27
<hr/>		

## List of Figures

Figure 1: Lenovo ThinkServer Partner Pack for Microsoft SCOM-Main Screen .....	7
Figure 2: Installer Pack .....	9
Figure 3: Welcome screen .....	9
Figure 4: License Agreement Screen .....	10
Figure 5: Select Destination Location.....	11
Figure 6: Select SCOM.....	12
Figure 7: Ready to Install.....	12
Figure 8: Installation complete Dialog Box .....	13
Figure 9: LenovoThinkServer Partner Pack Folder Structure.....	13
Figure 10: Management Pack Screen.....	14
Figure 11: SCOM Console Screen.....	15
Figure 12: SCOM Administration Overview Page .....	15
Figure 13: SCOM Management Pack List.....	16
Figure 14: Import Management Packs Link .....	16
Figure 15: Selecting Management Packs .....	17
Figure 16: Adding Management Packs from Disk.....	17
Figure 17: Online Catalog Connection Dialog Box.....	18
Figure 18: Locating Lenovo.TMM.Server.mp File .....	18
Figure 19: Installing Management Packs.....	19
Figure 20: Management Packs List with Lenovo ThinkServer Partner Pack .....	20
Figure 21: Hosts State Main Screen.....	20
Figure 22: All Control Panel Screen .....	21
Figure 23: Uninstall Screen .....	22
Figure 24: Uninstall Message .....	22
Figure 25: Delete Lenovo ThinkServer Partner Pack from Administration Screen .....	23
Figure 26: Confirmation Message.....	23

# 1 Introduction

## 1.1 Purpose

The purpose of this guide is to explain the processes involved in installing the Lenovo ThinkServer Partner Pack. Lenovo ThinkServer Partner Pack for Microsoft System Center Operations Manager can be installed on a System Center Operations Manager (SCOM) server.

## 1.2 Audience and Scope



This guide is intended for system administrators and network administrators who are responsible for installing and managing the Lenovo ThinkServer with Intel® Xeon® processor E5-2600 v3 or Intel® Xeon® processor E5-2600 v2 product family and above.

This guide covers:

- Pre-requisites
- Installation procedure
- Launching the application
- Troubleshooting
- Registering
- Unregistering
- Un-installation
- Frequently asked questions

## 1.3 Conventions Used in the Document

This table describes the symbols used in this guide.

Convention	Explanation
<b>Bold</b>	Elements of graphical user interface, for example, menus and command buttons
>	Sequence of menu items to choose
courier font	User input, directory and file names, command line syntax and examples
	This symbol highlights important information and tips.
	This symbol is used to draw attention to risks which may represent a health hazard or which may lead to data loss or damage to the hardware.

## 2 Installation Overview

The Lenovo ThinkServer Partner Pack for Microsoft System Center Operations Manager contains an installation program that helps you to install the Partner Pack. Upon running the installation wizard, you can install the management pack, tools and documents of Lenovo ThinkServer Partner Pack for Microsoft System Center Operations Manager in the *Lenovo ThinkServerPartnerPack* folder, which is in the *Program Files* folder of your computer. You can import the management pack from the *LenovoThinkServerPartnerPack\SCOM\MP\* folder through the SCOM console later.

### 2.1 Overview of the Application

The Lenovo ThinkServer Partner Pack for Microsoft System Center Operations Manager application, which is developed for the SCOM environment, can manage the Lenovo ThinkServer with Intel® Xeon® processor E5-2600 v3 or Intel® Xeon® processor E5-2600 v2 product family and above. The Lenovo ThinkServer Partner Pack for Microsoft System Center Operations Manager can be installed on a SCOM server.

The Lenovo ThinkServer Partner Pack for Microsoft System Center Operations Manager serves as a simplified management pack that can easily integrate into the SCOM server. It enables you to navigate through the Lenovo Screens without deviating from the SCOM user-interface screens. Knowledge on the other tools is not necessary to use the Lenovo ThinkServer Partner Pack for Microsoft System Center Operations Manager.

The Lenovo ThinkServer Partner Pack for Microsoft System Center Operations Manager provides the following details:

- Detailed Server information of the Lenovo ThinkServer at the Host level from the **Hosts** view.
- Information including the number of Virtual Machines and Operating System version from the **Server Information** detailed view
- Inventory of the detailed Server information including the Memory, Processors and Server Information. In addition to this, the FAN, Temperature Sensor, FRU and Power Supply Unit (PSU) information is available out of band
- Details of the System board such the Server model, Serial number & UUID

Apart from the above details, the following functionalities are also embedded in the Lenovo ThinkServer Partner Pack for Microsoft System Center Operations Manager.

- Power-off and Restart through in-band functionality
- The capability to directly launch the remote console of a selected host (Remote Desktop)
- The capability to link and launch the Lenovo ThinkServer System Manager web page of the selected host
- The capability to Launch Host Console out of band

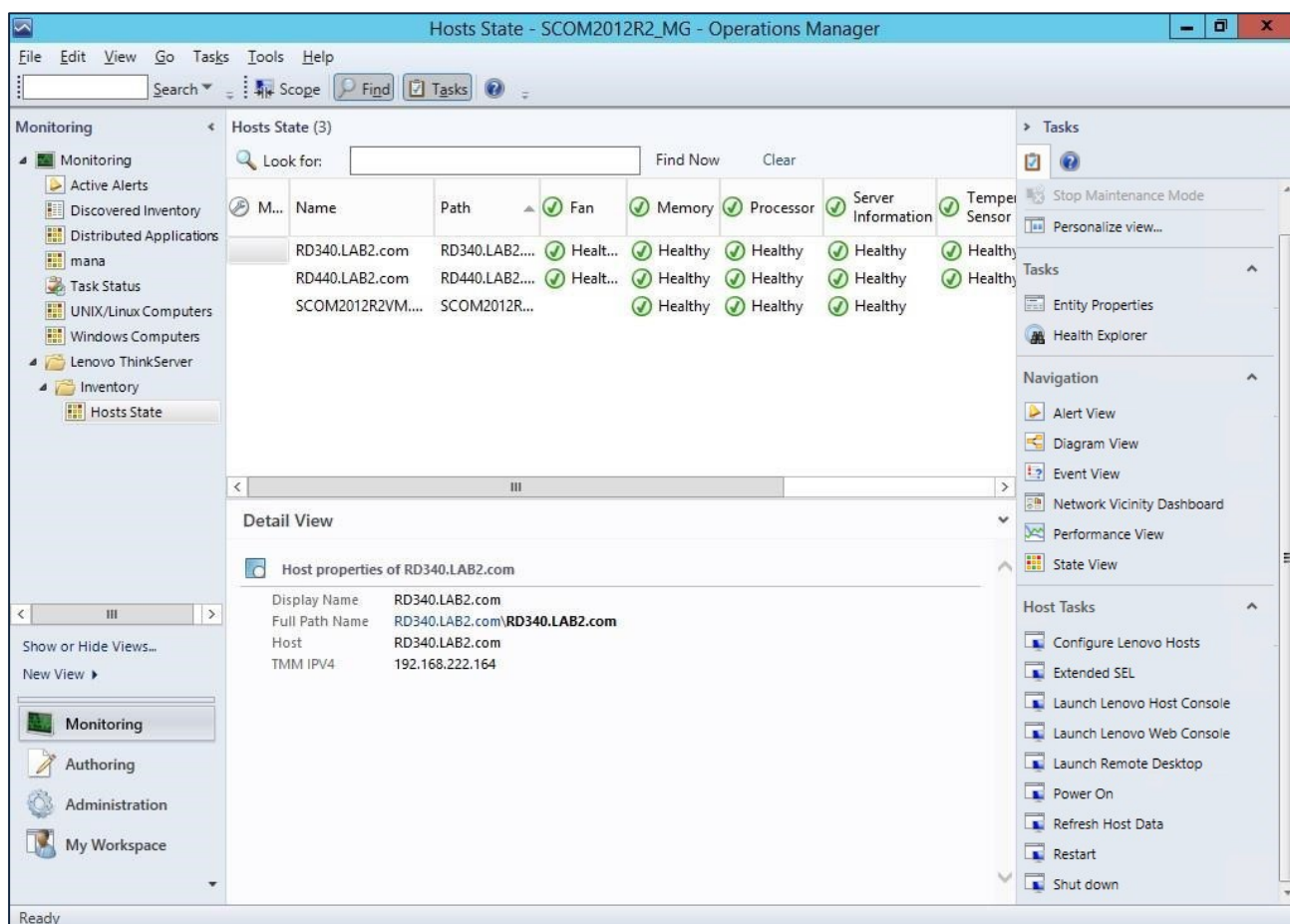


Figure 1: Lenovo ThinkServer Partner Pack for Microsoft SCOM-Main Screen

## 2.2 System Requirements

This section describes the hardware and software prerequisites to install Lenovo ThinkServer Partner Pack for Microsoft System Center Operations Manager.

### 2.2.1 Hardware Requirements

The following list provides the minimum hardware requirements to install the Lenovo ThinkServer Partner Pack for Microsoft System Center Operations Manager.

- Lenovo ThinkServer server with Intel® Xeon® processor E5-2600 v3 or Intel® Xeon® processor E5-2600 v2 product family and above along with Windows Server 2008 R2 SP1 / Windows Server 2012 (SP1, SP2) / Windows Server 2012 R2.
- 64 bit HW with 8GB or more RAM
- 500 GB HDD
- 1024 \* 728 Resolution Monitor or Higher
- TFT monitor for better resolution and width

### 2.2.2 Software Requirements

The following list provides the minimum software requirements to install the Lenovo ThinkServer Partner Pack for Microsoft System Center Operations Manager.

- Operating Systems: Windows Server 2008 R2 SP1 / Windows Server 2012 (SP1, SP2) / Windows Server 2012 R2.
- System Center Products: Operations Manager 2012 SP1
- SQL Server: SQL Server 2012 R2 / SQL Server 2008 R2
- SCOM: SCOM 2012 R2 / SCOM 2012 SP1

#### **Other Pre-requisites**

- PowerShell 3.0 or higher should be installed on the SCOM Server
- .Net 4.0 or above should be installed on the SCOM Server
- Microsoft Report viewer

## **2.3 Pre-installation Task**

Before installing the Lenovo ThinkServer Partner Pack for Microsoft System Center Operations Manager on your system, perform the following pre-installation steps:

1. Ensure that you have the Administrator access to the target computer.
2. Ensure that your computer is updated with the latest Windows updates.
3. Lenovo ThinkServer Partner Pack for Microsoft System Center Operations Manager will be installed only on the Management. Hence, make sure that you have a SCOM server, SQL Server installed & properly configured already.
4. Ensure you have all the following required pre-requisites installed in your server:
  - a. PowerShell 3.0 or higher need to be installed in SCOM Server
  - b. Net 4.0 or above need to be installed in SCOM Server
  - c. Microsoft Report viewer
5. Close all the applications including the Operations console, Windows NT Event Viewer and PowerShell etc.



## 2.4 Installation Procedure

1. Once all the prerequisite checks and controls are completed, you may proceed with the Lenovo ThinkServer Partner Pack installation. In order to start with the Lenovo ThinkServer Partner Pack for Microsoft System Center Operations Manager installation, double-click on the Installer package:

*LenovoThinkServerPartnerPackSCOM.EXE*

and follow the wizard to complete the installation.



Figure 2: Installer Pack

2. The Lenovo welcome screen is displayed

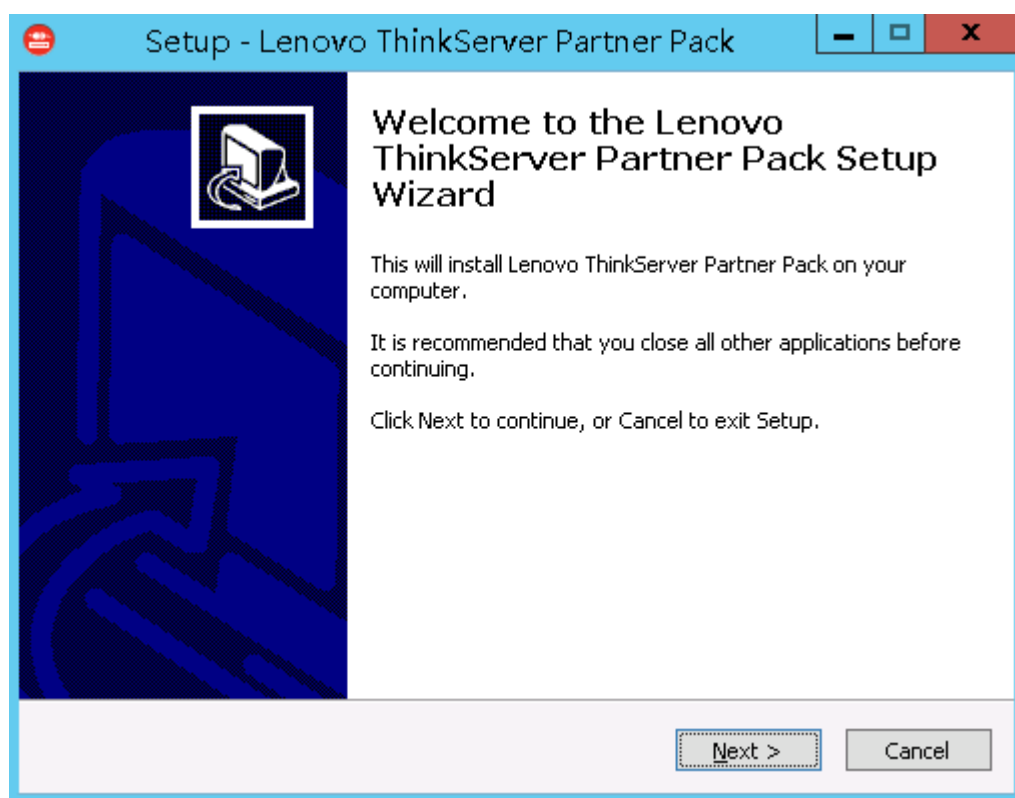


Figure 3: Welcome screen

3. Click Next to proceed. The Lenovo ThinkServer Partner Pack License Agreement screen is displayed.

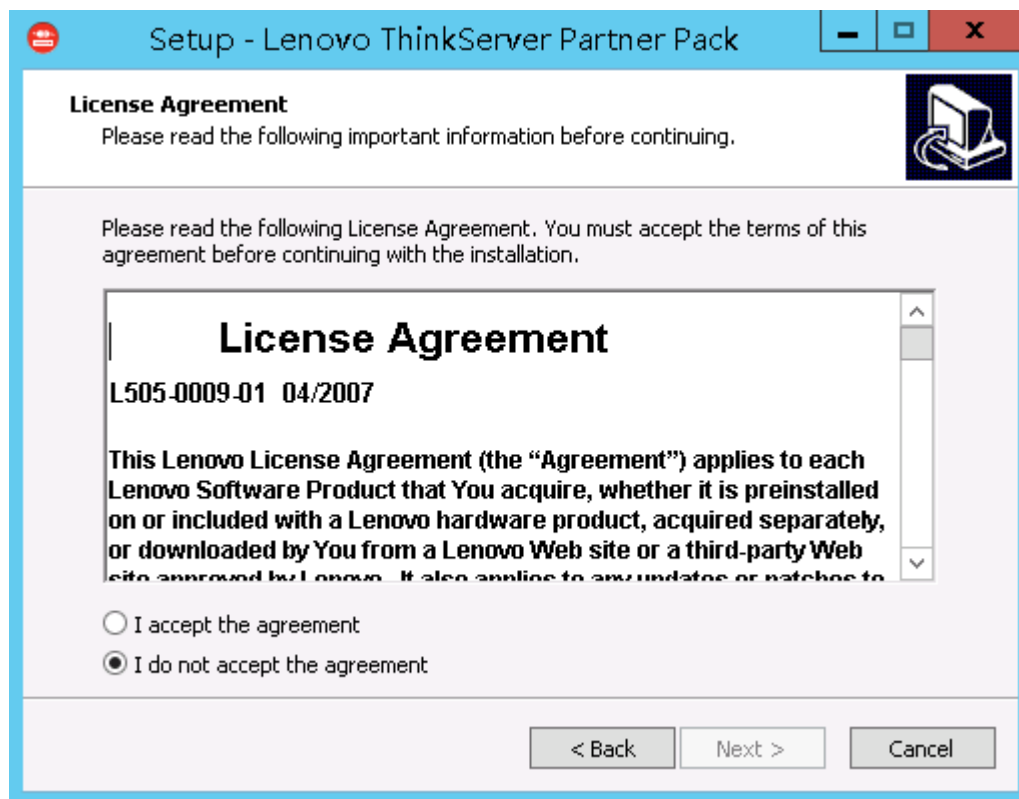


Figure 4: License Agreement Screen

4. The End User License Agreement (EULA) screen provides the End User License Agreement details which need to be read before proceeding with the installation. In order to proceed with the installation, select **“I accept the agreement”** and Click **Next**. If the **“I do not accept the agreement”** option is selected, the installation is terminated.

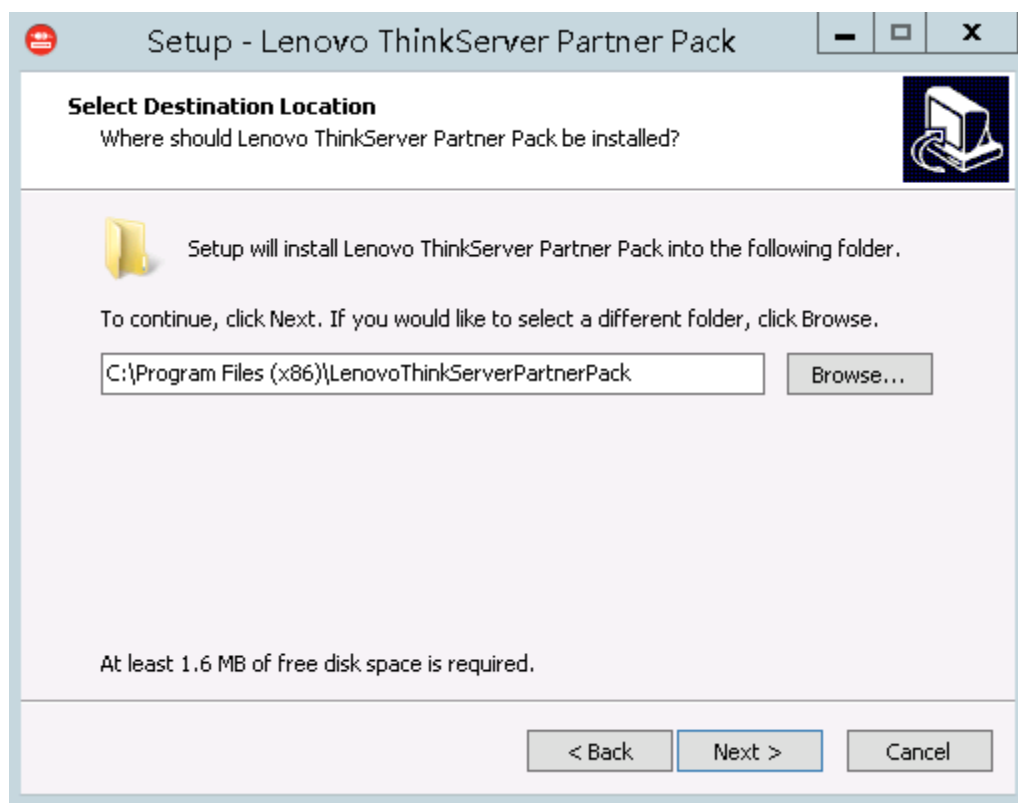


Figure 5: Select Destination Location

5. Select Destination Location screen will be displayed. If you want to change the Installation folder shown by default, click on Browse button and choose desired Folder as destination location for the installation. Click **Next**.
6. The **Select Components** screen will be displayed. Select **SCOM Plugin** and Click **Next**.

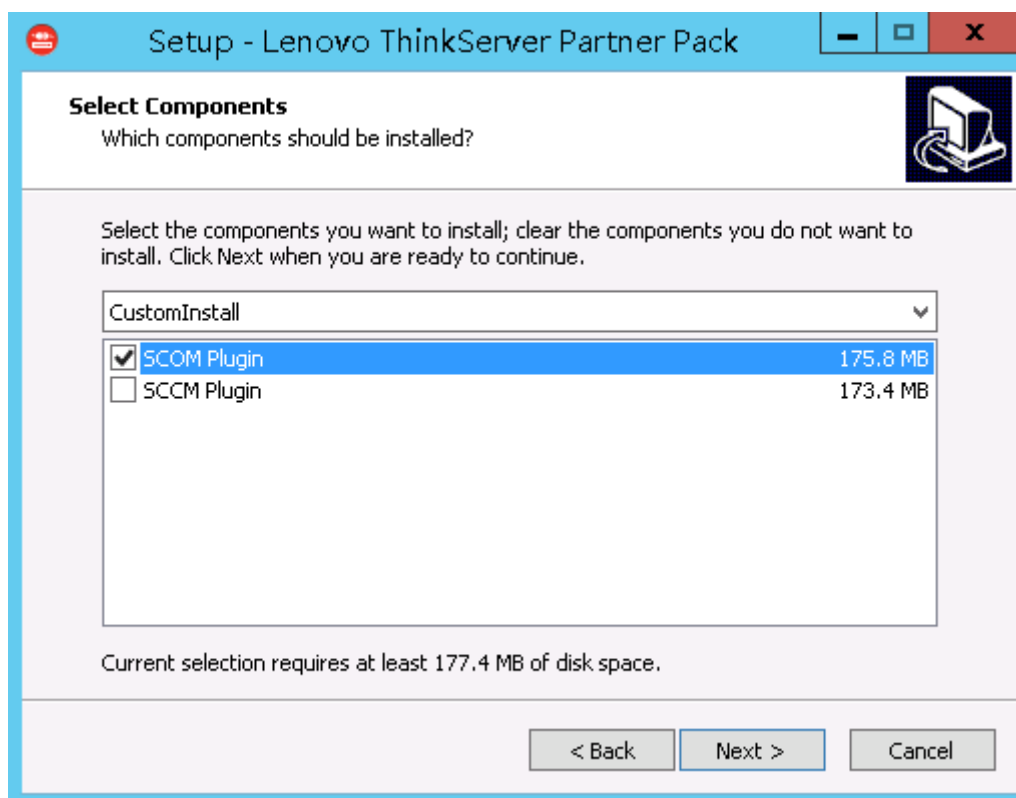


Figure 6: Select SCOM

7. Information chosen in previous step will be displayed in this screen.

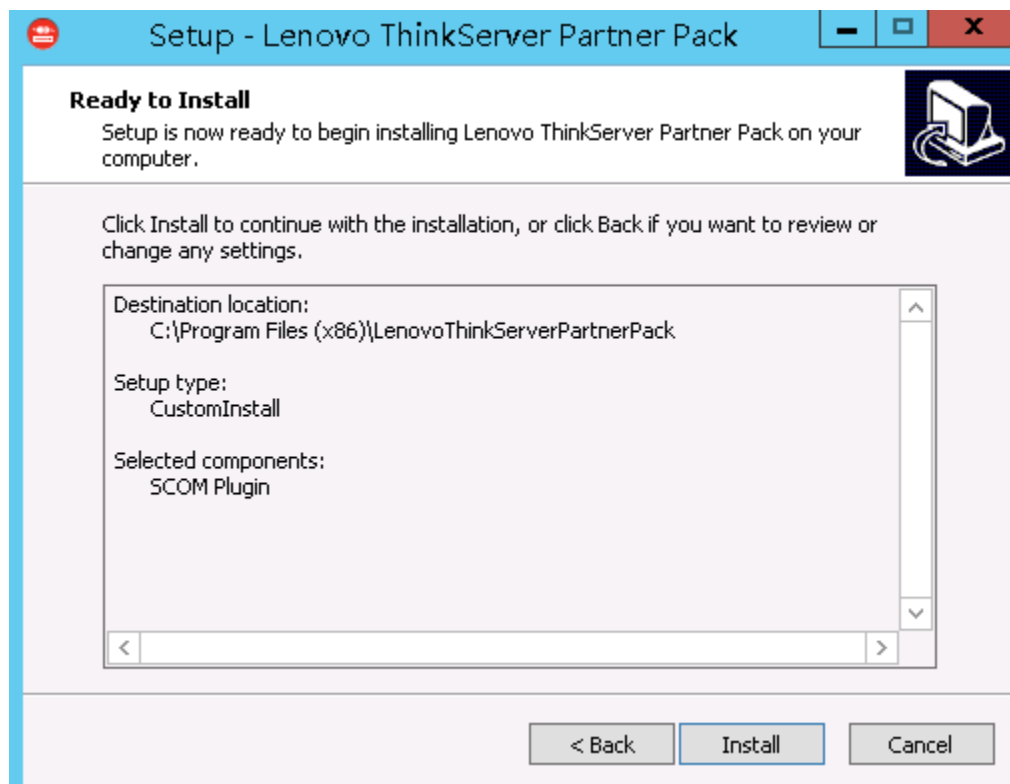


Figure 7: Ready to Install

8. Click **Install**.

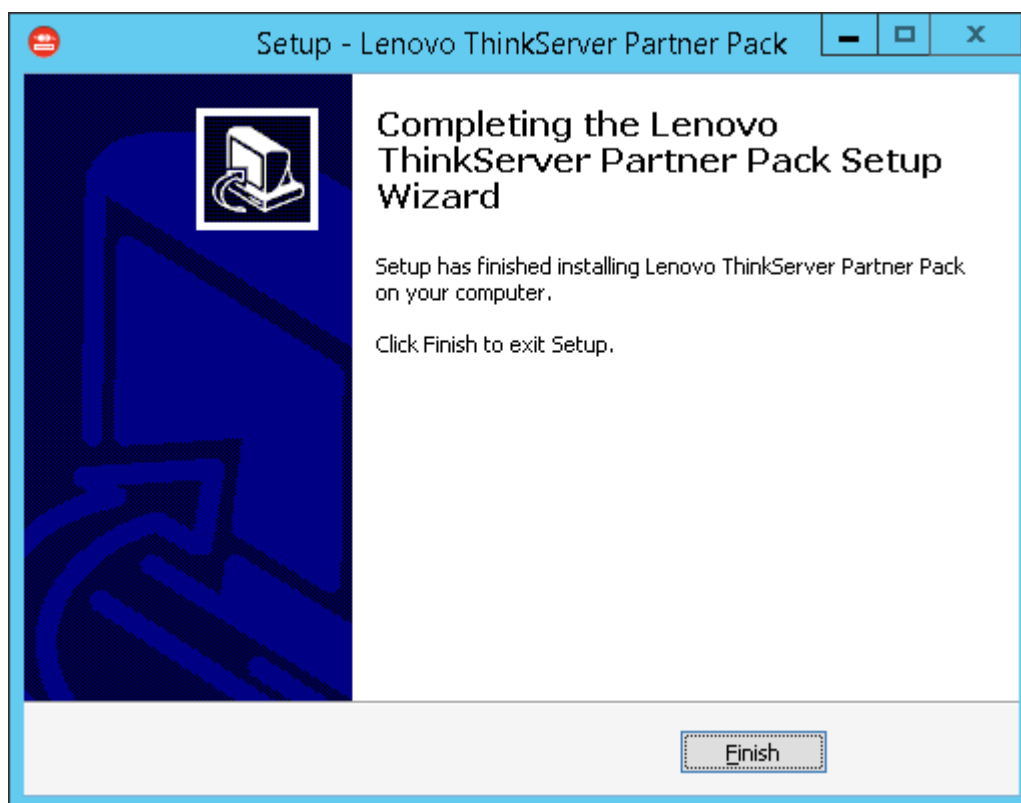


Figure 8: Installation complete Dialog Box

9. Click **Finish**.

10. Navigate to the folder chosen as destination location in step 5. Double-click the *LenovoThinkServerPartnerPack* folder. You will be able to see the folder structure as shown below.

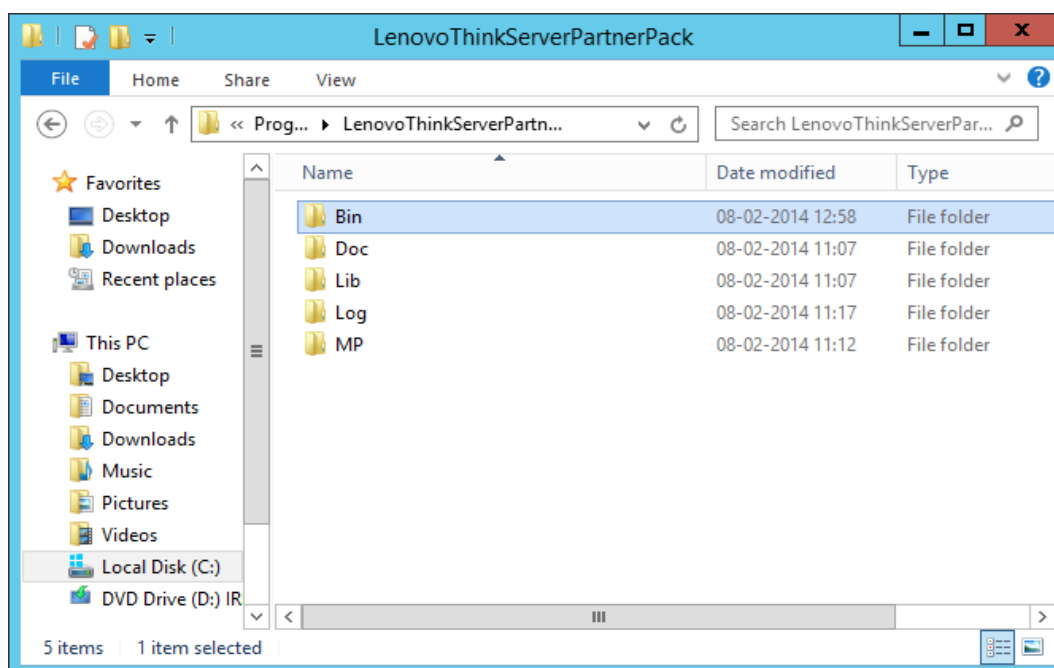


Figure 9: LenovoThinkServer Partner Pack Folder Structure

11. Double-click the **MP** folder where the management pack is placed by the installation program.

12. Import the management pack from the MP folder to SCOM by using the **Import Management Pack** interface in the SCOM console as mentioned in the below steps.

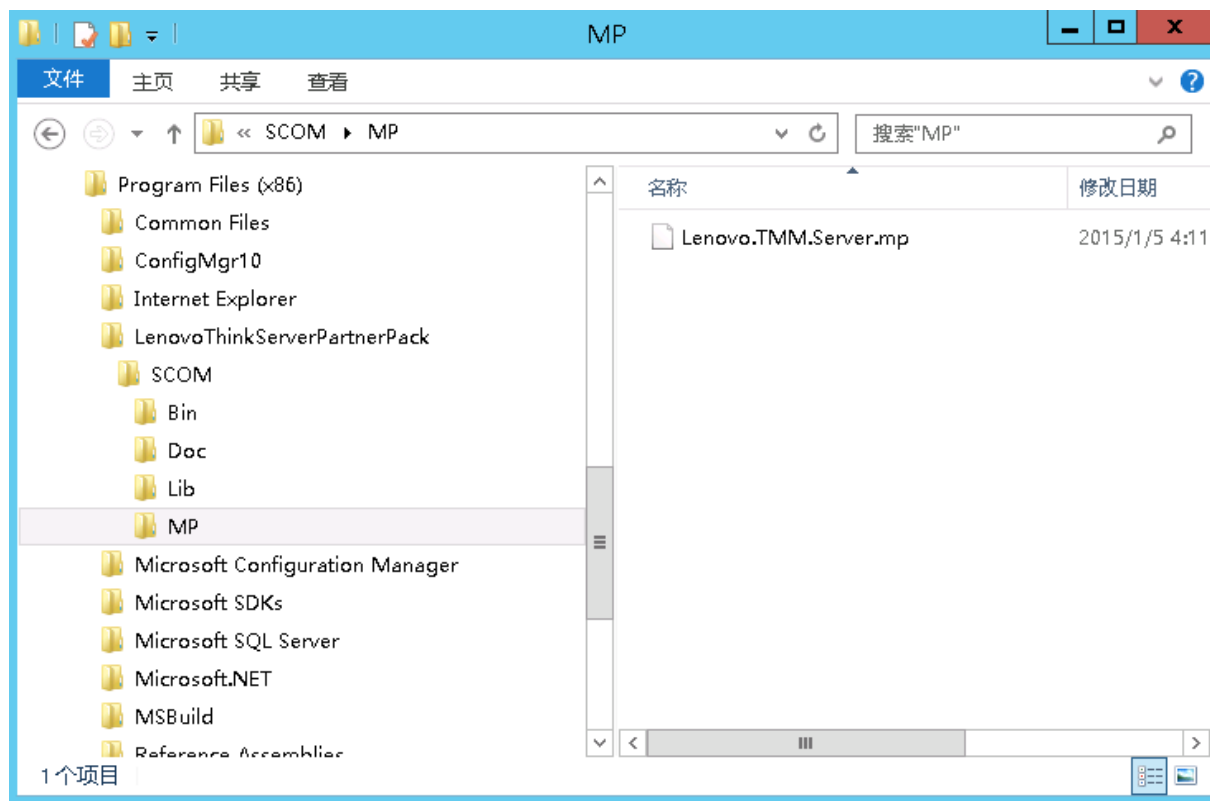


Figure 10: Management Pack Screen

## 2.5 Importing Management Pack through SCOM Console

1. Open the SCOM 2012 Console.



Figure 11: SCOM Console Screen

2. On the bottom left of the screen, you will find the **Monitoring, Authoring, Reporting, Administration** tabs.

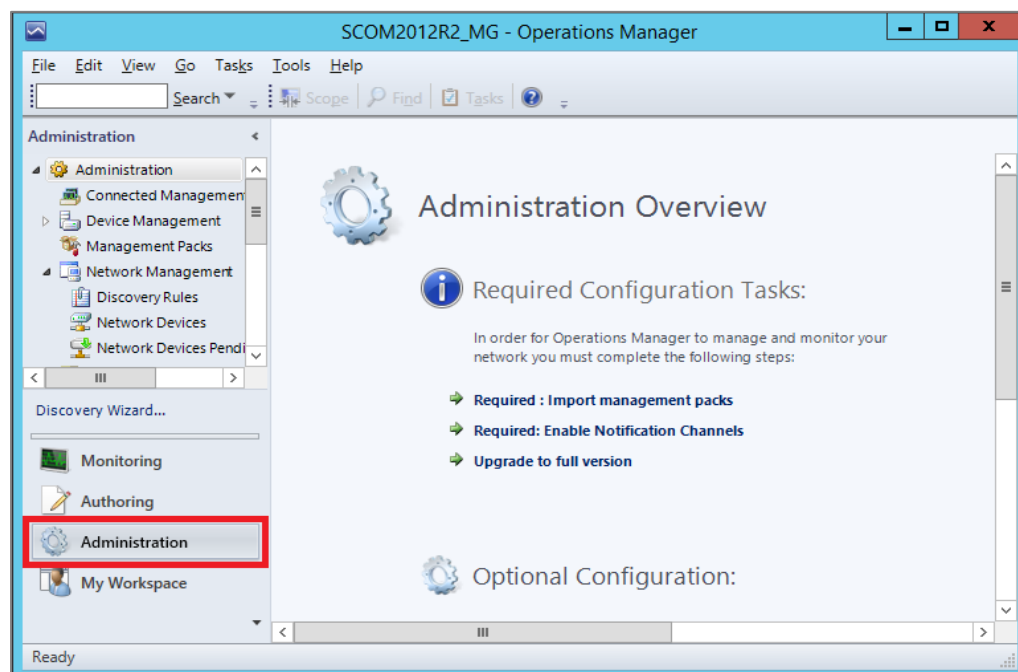


Figure 12: SCOM Administration Overview Page

3. Select the **Administration** tab to view the Admin Console as shown in the above screen.
4. Click the **Management Packs** tab under the **Administration** pane.

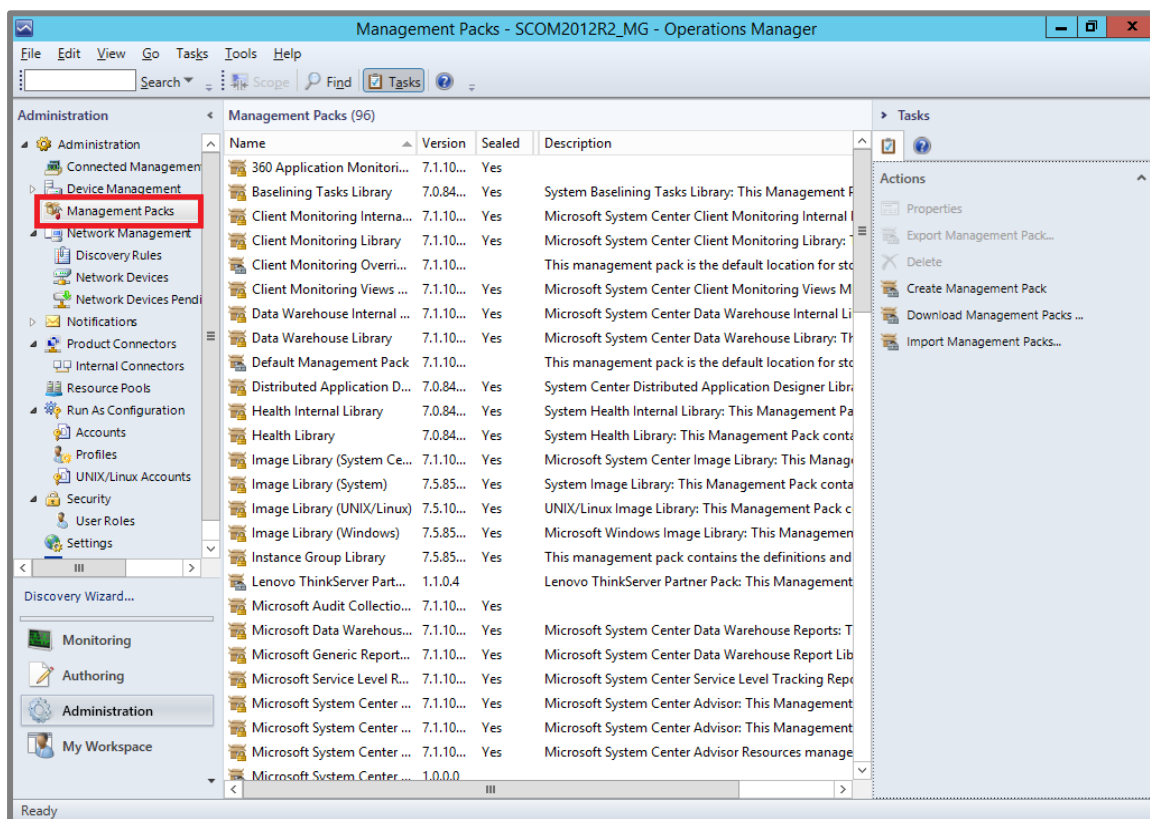


Figure 13: SCOM Management Pack List

- On the right of the screen, in the **Actions** pane, select the **Import Management Packs** link.

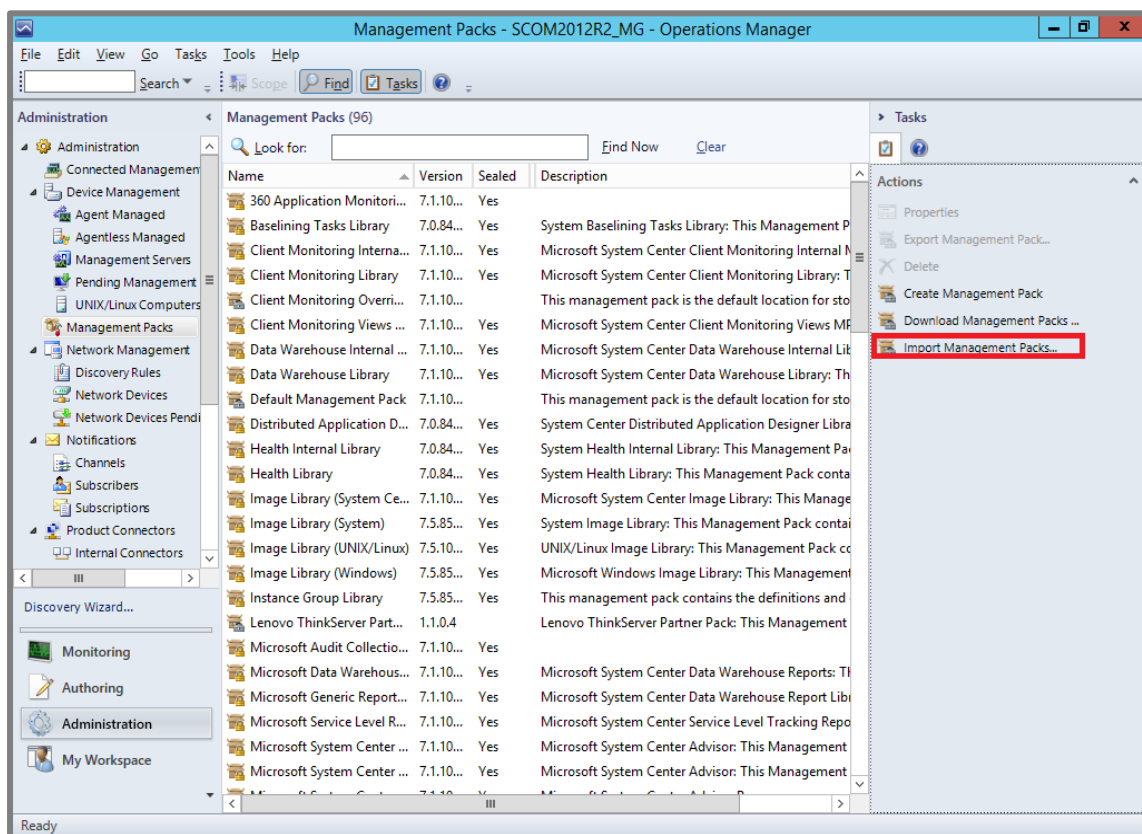


Figure 14: Import Management Packs Link



6. The following dialog box is displayed for importing the Management Packs.

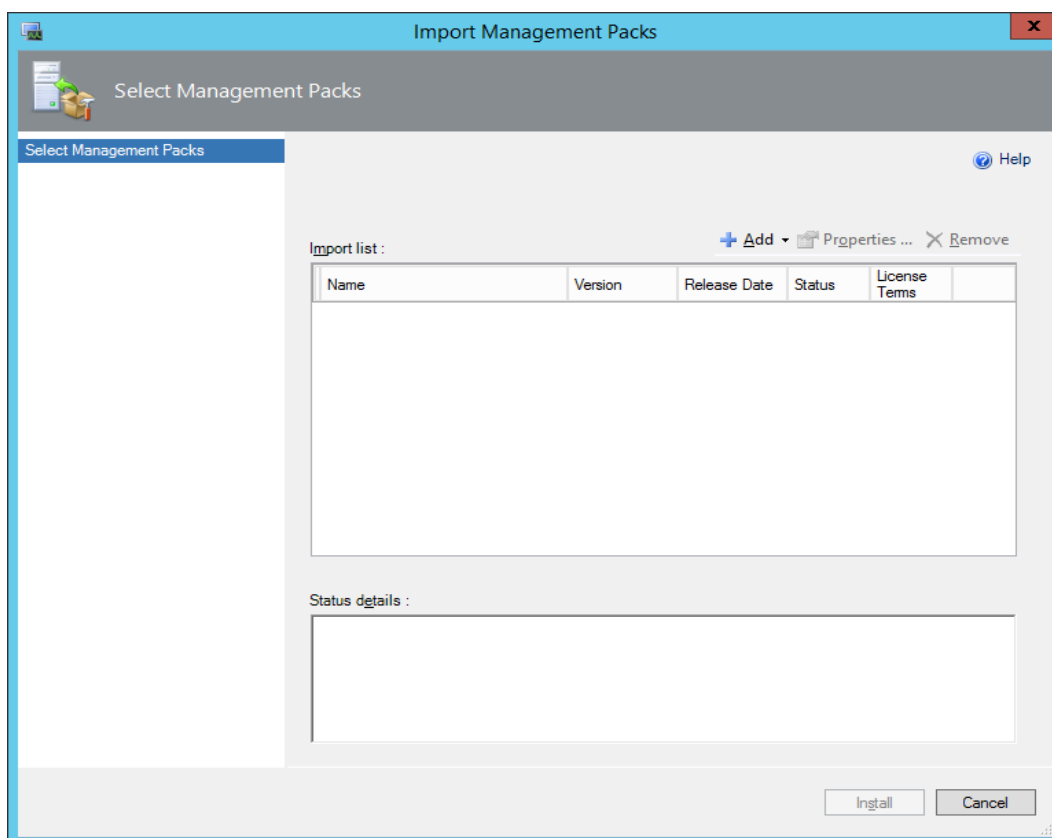


Figure 15: Selecting Management Packs

7. On the **Import Management Packs** dialog box, click the **Add** button.

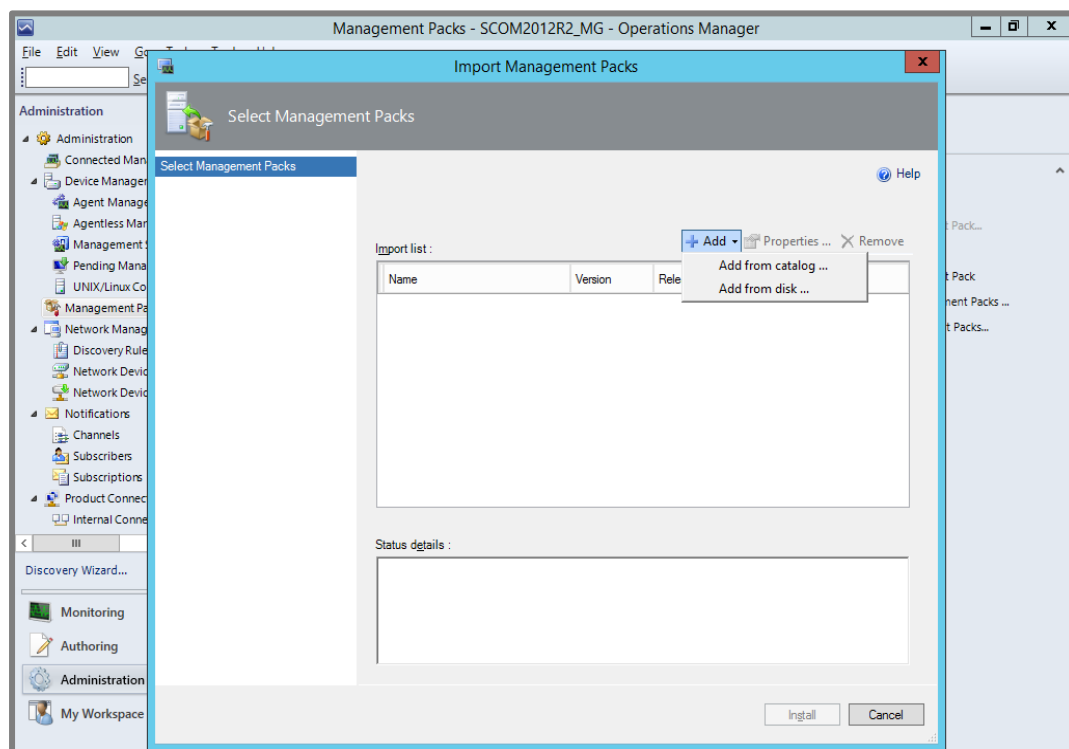


Figure 16: Adding Management Packs from Disk

8. Click **Add from Disk**.

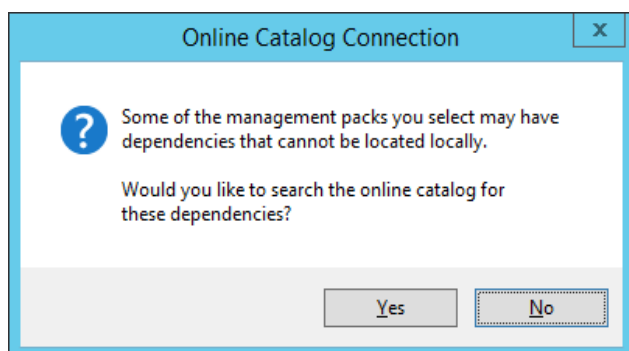


Figure 17: Online Catalog Connection Dialog Box

9. Click **No**.

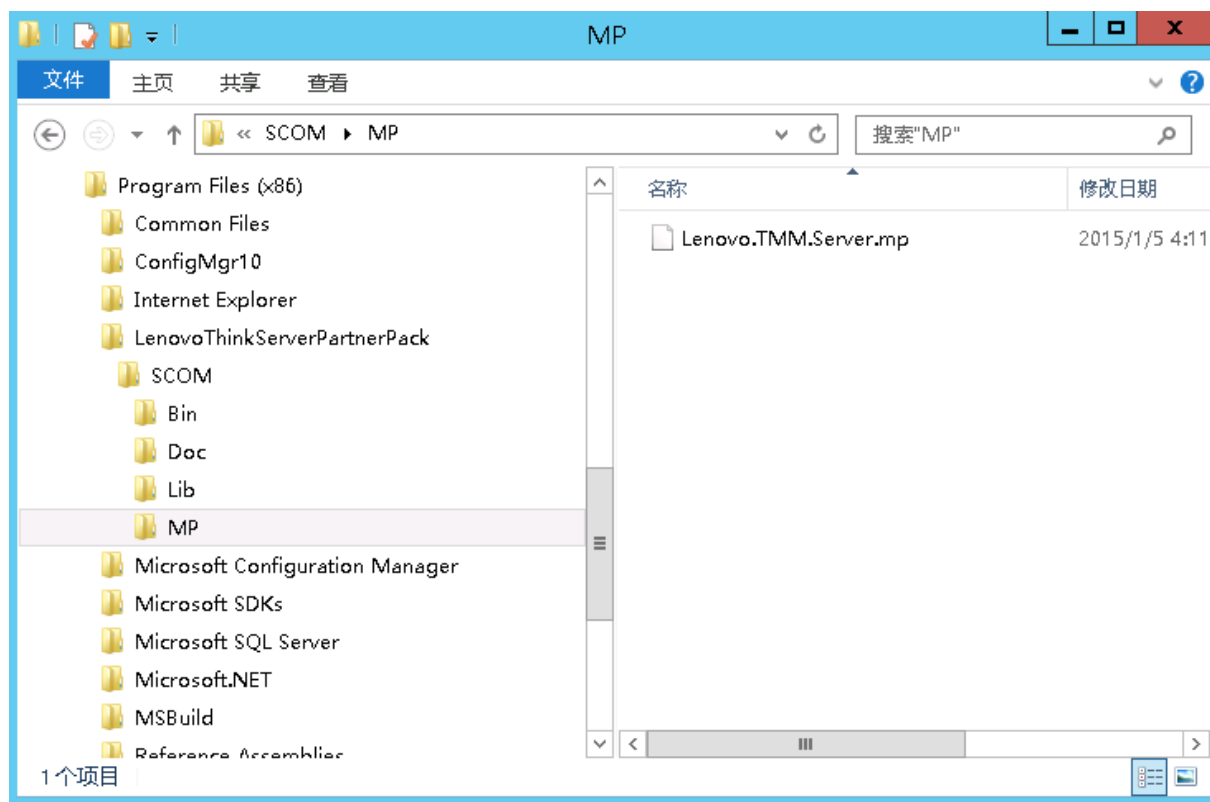


Figure 18: Locating Lenovo.TMM.Server.mp File

10. In the browse window, locate the management pack, which is placed through the installation program. The Management pack is at the *LenovoThinkServerPartnerPack\SCOM\MP* folder inside the selected destination location in Step 5.

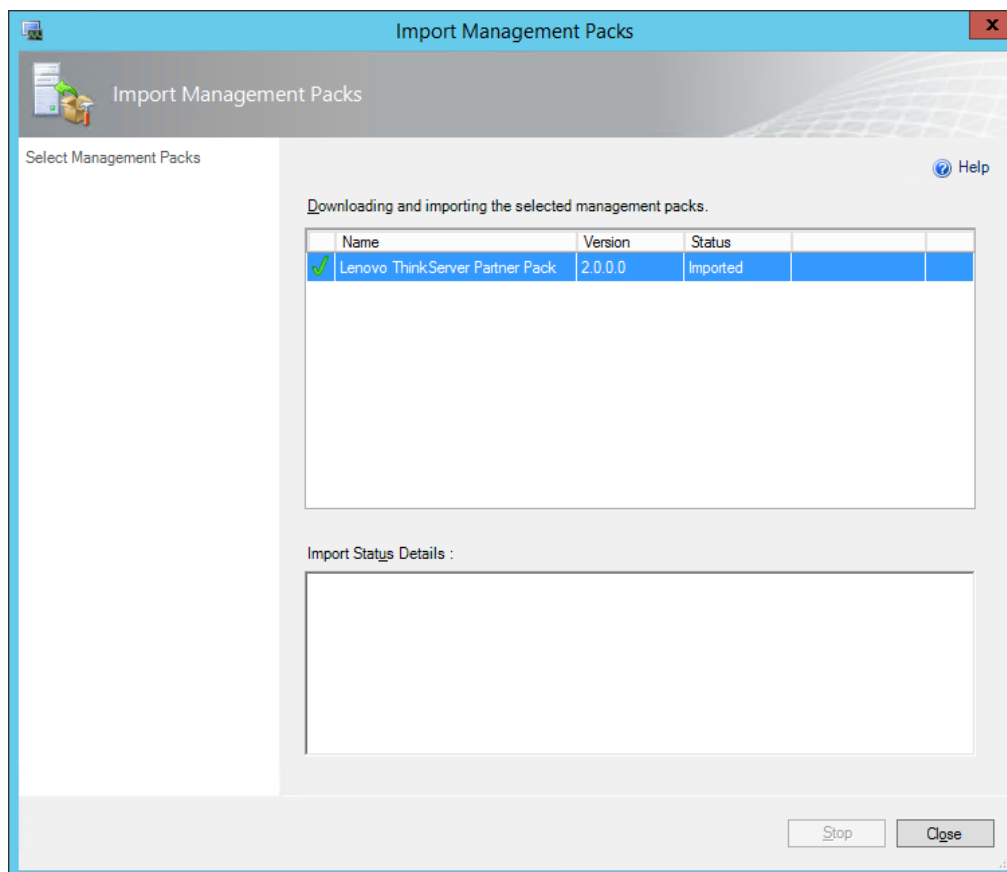


Figure 19: Installing Management Packs

11. Click **Install**.
12. Once the installation completes, a dialog box with **Close** button and status will be shown as Imported.
13. Click **Close** and you can see the Management pack in the Administration Management pack list.
14. In the top-left, click the **Management packs** tab and you can see the imported Management pack with the name **Lenovo ThinkServer Partner Pack**.

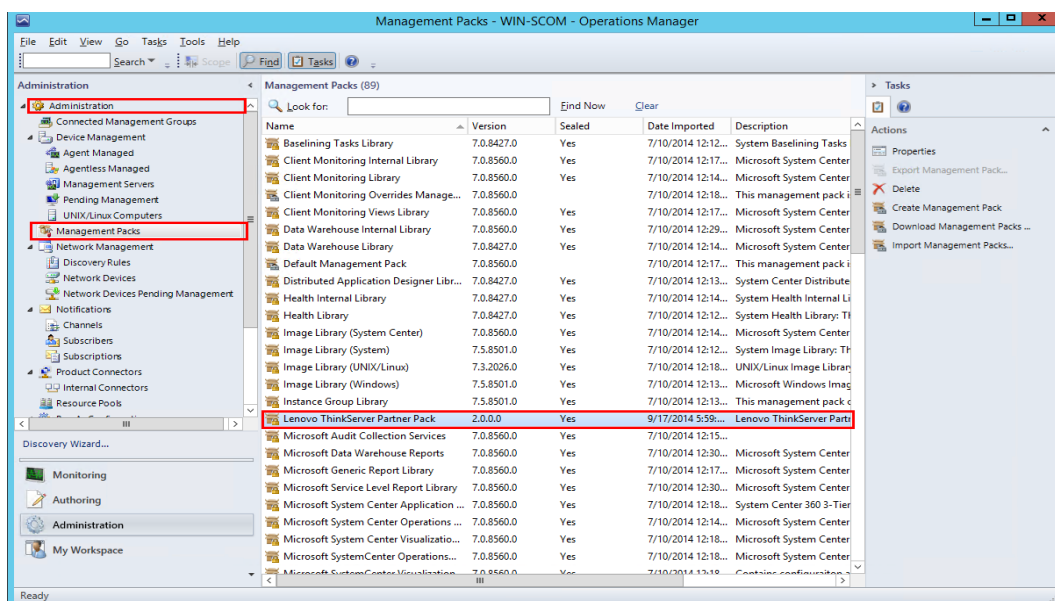


Figure 20: Management Packs List with Lenovo ThinkServer Partner Pack

15. In the left pane, at the bottom click the **Monitoring** tab.
16. The Monitoring Console screen is displayed. Wait for a few seconds to fetch the data and then press refresh. Navigate to *Monitoring>Lenovo ThinkServer>Inventory>Hosts State* folder.
17. A screen with a list of discovered servers along with the overall status for its components is displayed. You can also view the **Host Tasks** at the right of the screen. For more details on features of the Lenovo ThinkServer Partner Pack for Microsoft System Center Operations Manager, refer to the user guide for Lenovo ThinkServer Partner Pack for Microsoft System Center Operations Manager.

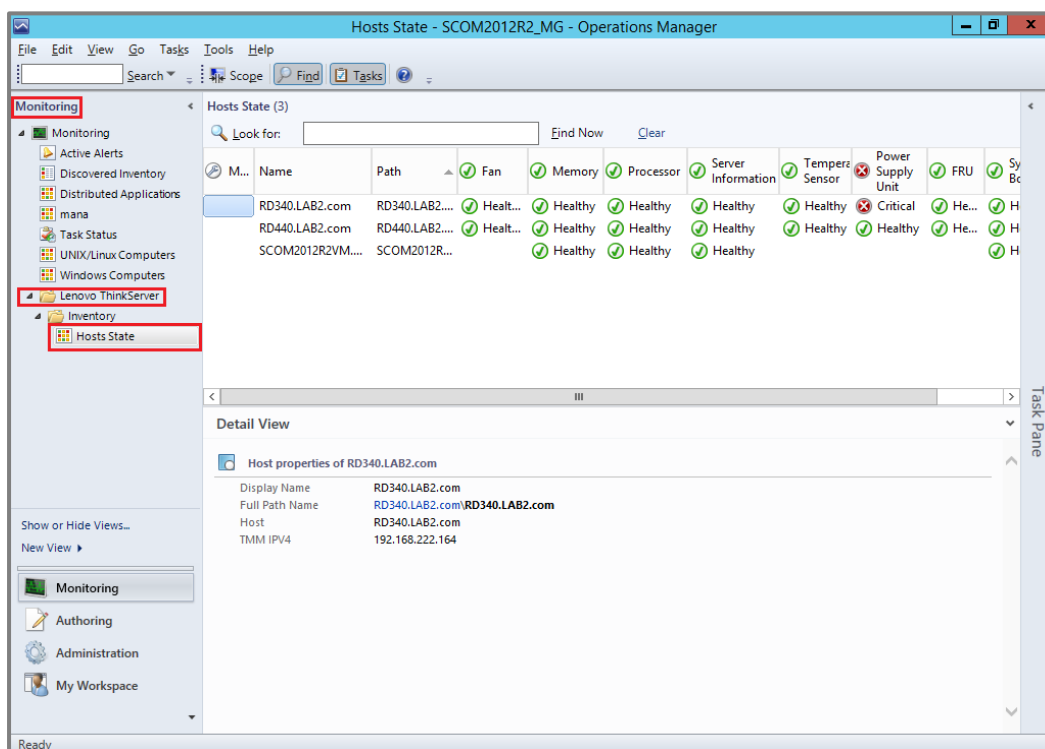


Figure 21: Hosts State Main Screen

## 2.6 Uninstallation Procedure

### 2.6.1 Uninstalling Lenovo ThinkServer Partner Pack for Microsoft System Center Operations Manager

Lenovo ThinkServer Partner Pack for Microsoft System Center Operations Manager application can be uninstalled by using the following steps:

1. Navigate to **Control Panel>Add and Remove Programs/Programs & Features**.

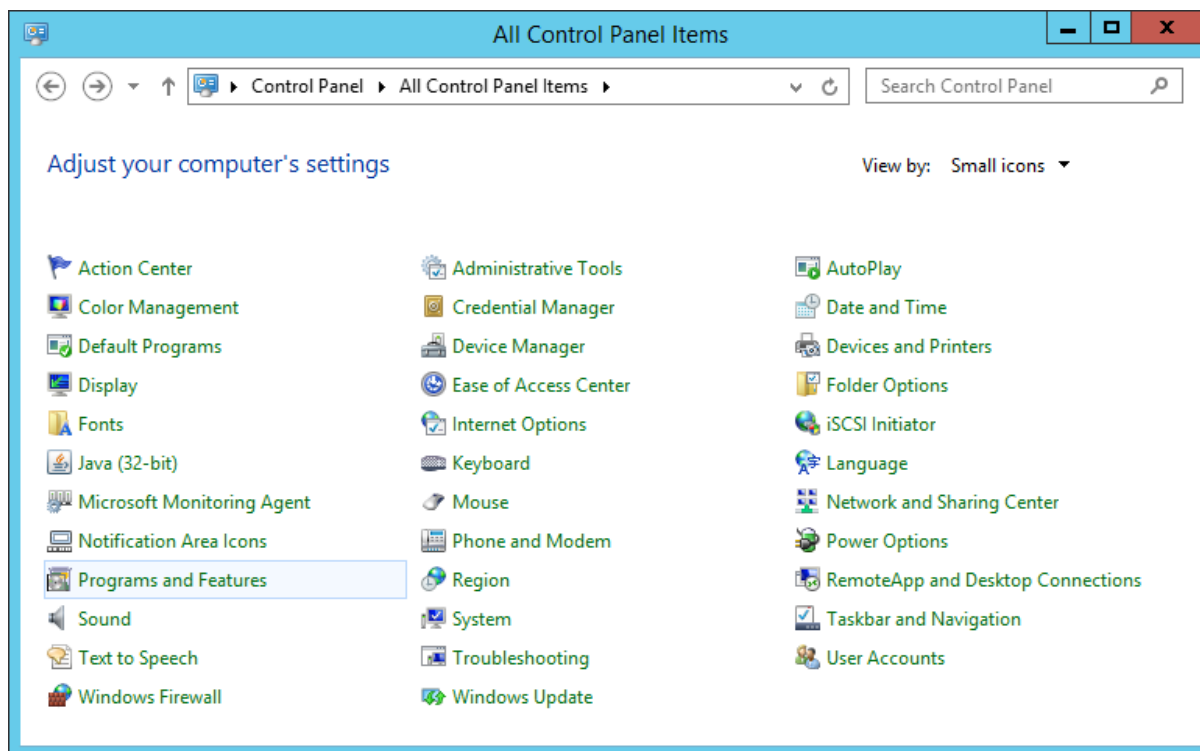


Figure 22: All Control Panel Screen

2. Select **Lenovo ThinkServer Partner Pack for Microsoft System Center Operations Manager** installer and click **Uninstall**.

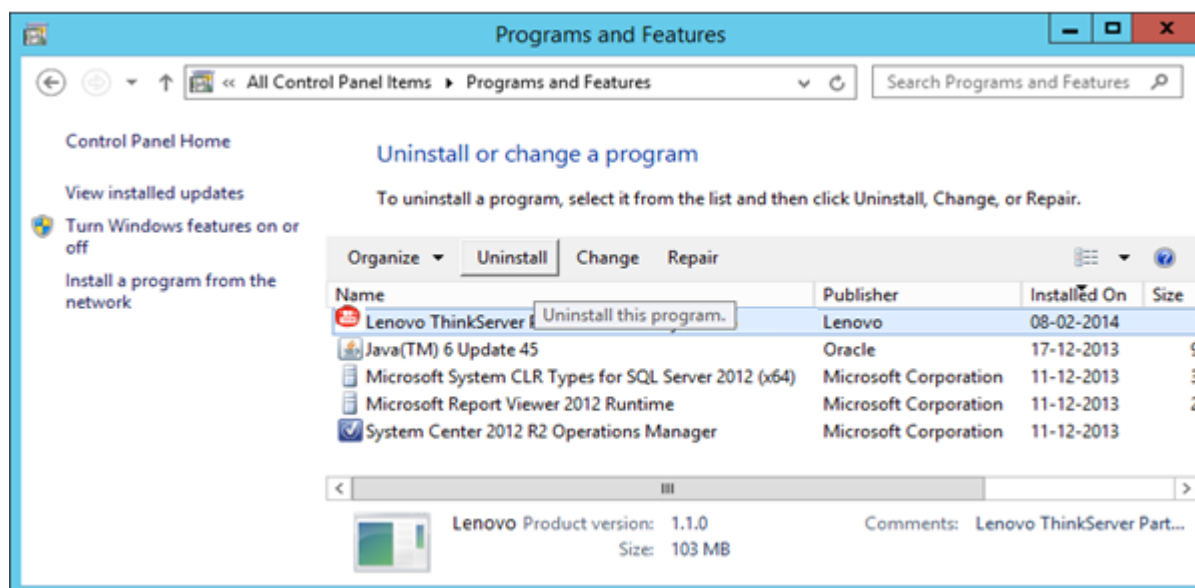


Figure 23: Uninstall Screen

3. A dialog box with a message **Are you sure you want to uninstall Lenovo ThinkServer Partner Pack for Microsoft System Center Operations Manager** is displayed.
4. Click **Yes** to uninstall.

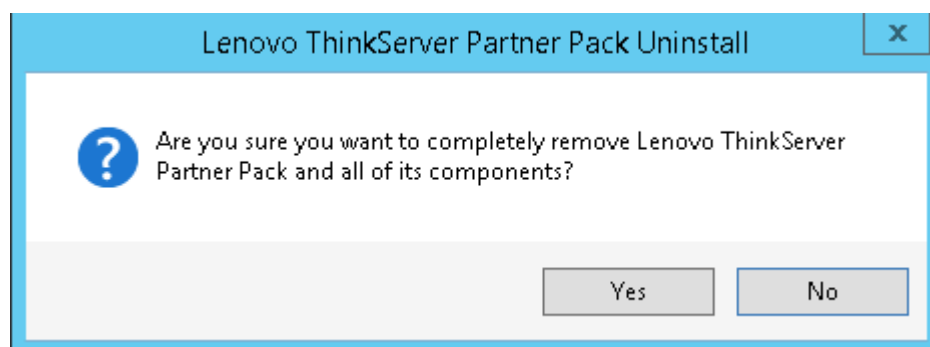


Figure 24: Uninstall Message

5. Lenovo ThinkServer Partner Pack for Microsoft System Center Operations Manager is uninstalled from your computer.

## 2.6.2 Deleting Management Pack from SCOM

In order to delete the Management Package from SCOM, perform the following steps:

1. Open SCOM console.
2. Navigate to **Administration>Management Packs**.
3. Select the **Lenovo ThinkServer Partner Pack**.
4. On the top right of the screen, click **Delete** to delete the management pack.
5. The management pack is deleted from the SCOM.

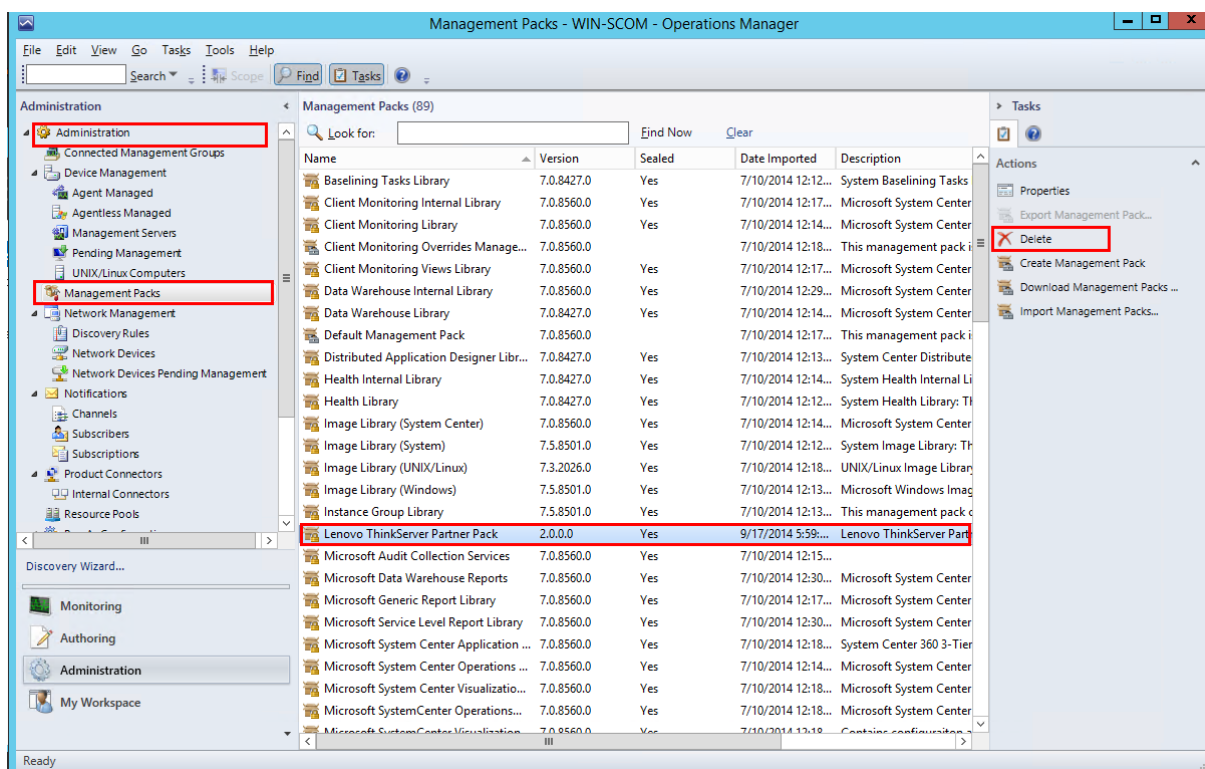


Figure 25: Delete Lenovo ThinkServer Partner Pack from Administration Screen

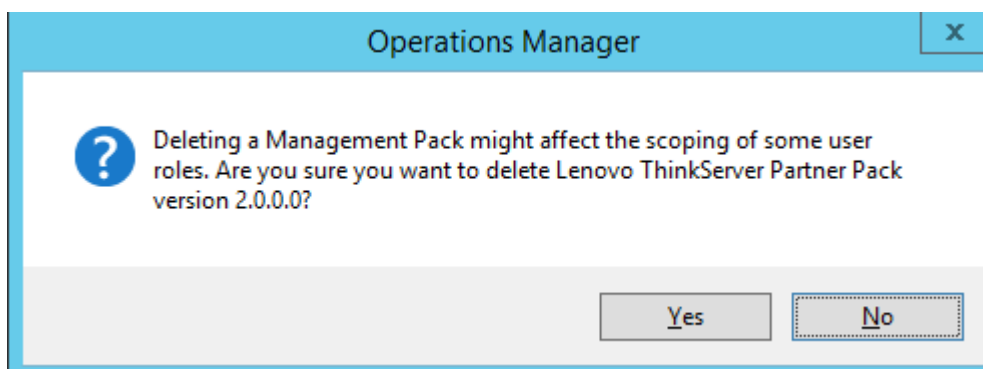



Figure 26: Confirmation Message

6. Click **Yes** to delete the Management pack. The Management pack is deleted.

## 3 Additional Information

### 3.1 Troubleshooting

 **Error# 1:** *Lenovo ThinkServer Partner Pack for Microsoft System Center Operations Manager fails, Event ID 26319*

*Solution:* Delete the old version of the Lenovo ThinkServer Partner Pack and import the new version of the Lenovo ThinkServer Partner Pack for Microsoft System Center Operations Manager.

### 3.2 Abbreviations

Value	Definition
SCOM	System Center Operations Manager
MP	Management Pack
BMC	Baseboard Management Controller
CIM	Common Information Model
HTML	Hyper Text Mark-up Language

### 3.3 Frequently Asked Questions (FAQs)

**1. Lenovo ThinkServer Partner Pack for Microsoft System Center Operations Manager will work with all Lenovo Servers?**

Lenovo ThinkServer Partner Pack for Microsoft System Center Operations Manager is available only for Lenovo ThinkServer with Intel® Xeon® processor E5-2600 v2 product family or Intel® Xeon® processor E5-2600 v3 product family or above.

**2. Does Lenovo ThinkServer Partner Pack for Microsoft System Center Operations Manager work with browsers like Google Chrome & Mozilla Firefox?**

No. Lenovo ThinkServer Partner Pack for Microsoft System Center Operations Manager works with SCOM console only.

**3. Where can we install Lenovo ThinkServer Partner Pack for Microsoft System Center Operations Manager?**

Lenovo ThinkServer Partner Pack for Microsoft System Center Operations Manager is targeted on a SCOM server.

**4. What version of Windows Server & SCOM is supported with Lenovo ThinkServer Partner Pack for Microsoft System Center Operations Manager?**

Lenovo ThinkServer Partner Pack for Microsoft System Center Operations Manager supports only Windows Server 2008 R2/2012 R2 along with SQL Server 2008 R2 SP1 & Operations Manager 2012 SP1 and above. In windows server registry,



*HARDWARE\DESCRIPTION\System\BIOS\BaseBoardManufacturer* key value should contain **Lenovo**.

**5. Are there any different user privileges required for us to run the Lenovo ThinkServer Partner Pack for Microsoft System Center Operations Manager?**

No, but ensure that you have administrator access to the system, in which you are installing the Lenovo ThinkServer Partner Pack for Microsoft System Center Operations Manager. Moreover, there is no special user privilege required to access Lenovo ThinkServer Partner Pack for Microsoft System Center Operations Manager.

**6. What are the features available with Lenovo ThinkServer Partner Pack for Microsoft System Center Operations Manager and what components can I see with the Partner Pack?**

Details of Memory, Processors, Temperature, FAN & System board components can be seen by using the Lenovo ThinkServer Partner Pack for Microsoft System Center Operations Manager. The Lenovo ThinkServer Partner Pack for Microsoft System Center Operations Manager provides the following details:

- Detailed Server information of the Lenovo ThinkServer at the Host level from the **Hosts** view.
- Information including the number of Virtual Machines and Operating System version from the **Server Information** detailed view
- Inventory of the detailed Server information including the Memory, Processors and Server Information. In addition to this, the FAN, Temperature Sensor, FRU and Power Supply Unit (PSU) information is available out of band
- Details of the System board such the Server model, Serial number & UUID

Apart from the above details, the following functionalities are also embedded in the Lenovo ThinkServer Partner Pack for Microsoft System Center Operations Manager.

- Power-off and Restart through in-band functionality
- The capability to directly launch the remote console of a selected host (Remote Desktop)
- The capability to link and launch the Lenovo ThinkServer System Manager web page of the selected host
- The capability to Launch Host Console out of band

**7. Where can I get the Lenovo ThinkServer Partner Pack for Microsoft System Center Operations Manager?**

Lenovo ThinkServer Partner Pack for Microsoft System Center Operations Manager is available on the global website of Lenovo.

**8. How can I reach Lenovo if there is an issue with Lenovo ThinkServer Partner Pack for Microsoft System Center Operations Manager?**

You can reach Lenovo support (refer contact information) and submit your questions or concerns.

## 4 Appendix A. Notices

Lenovo may not offer the products, services, or features discussed in this document in all countries. Consult your local Lenovo representative for information on the products and services currently available in your area. Any reference to a Lenovo product, program, or service is not intended to state or imply that only that Lenovo product, program, or service may be used. Any functionally equivalent product, program, or service that does not infringe any Lenovo intellectual property right may be used instead. However, it is the user's responsibility to evaluate and verify the operation of any other product, program, or service.

Lenovo may have patents or pending patent applications covering subject matter described in this document. The furnishing of this document does not give you any license to these patents. You can send license inquiries, in writing, to:

Lenovo (United States), Inc.

1009 Think Place - Building One

Morrisville, NC 27560

U.S.A.

Attention: Lenovo Director of Licensing

LENOVO PROVIDES THIS PUBLICATION "AS IS" WITHOUT WARRANTY OF ANY KIND, EITHER EXPRESS OR IMPLIED, INCLUDING, BUT NOT LIMITED TO, THE IMPLIED WARRANTIES OF NON-INFRINGEMENT, MERCHANTABILITY OR FITNESS FOR A PARTICULAR PURPOSE. Some jurisdictions do not allow disclaimer of express or implied warranties in certain transactions, therefore, this statement may not apply to you.

This information could include technical inaccuracies or typographical errors. Changes are periodically made to the information herein; these changes will be incorporated in new editions of the publication. Lenovo may make improvements and/or changes in the product(s) and/or the program(s) described in this publication at any time without notice.

The products described in this document are not intended for use in implantation or other life support applications where malfunction may result in injury or death to persons. The information contained in this document does not affect or change Lenovo product specifications or warranties. Nothing in this document shall operate as an express or implied license or indemnity under the intellectual property rights of Lenovo or third parties. All information contained in this document was obtained in specific environments and is presented as an illustration. The result obtained in other operating environments may vary.

Lenovo may use or distribute any of the information you supply in any way it believes appropriate without incurring any obligation to you.

Any references in this publication to non-Lenovo Web sites are provided for convenience only and do not in any manner serve as an endorsement of those Web sites. The materials at those Web sites are not part of the materials for this Lenovo product, and use of those Web sites is at your own risk. Any performance data contained herein was determined in a controlled environment. Therefore, the result obtained in other operating environments may vary significantly. Some measurements may have been made on development-level systems and there is no guarantee that these measurements will be the same on generally available systems. Furthermore, some measurements may have been estimated through extrapolation. Actual results may vary. Users of this document should verify the applicable data for their specific environment.

## 5 Trademarks

Lenovo, the Lenovo logo, and ThinkServer are trademarks of Lenovo in the United States, other countries, or both.

Intel and Intel Core are trademarks of Intel Corporation in the United States, other countries, or both.

Hyper-V, Internet Explorer, Microsoft, Windows, and Windows Server are trademarks of the Microsoft group of companies.

Linux is a registered trademark of Linus Torvalds.

AMD and AMD Athlon are trademarks of Advanced Micro Devices, Inc.

Other company, product, or service names may be trademarks or service marks of others.